



**Yiwu Omet Packaging Co., Ltd.**

FSC CERTIFIED | BSCI AUDITED | OEM & ODM SOLUTIONS

# Beauty & Personal Care Packaging Portfolio

Custom Packaging Solutions for Skincare, Cosmetics, Fragrance,  
Wellness, Personal Care Brands.





# About Us



Based in China's dynamic manufacturing hub, Omet Pack has been a trusted global manufacturing partner for premium paper packaging since 2013. We specialize in tailormade packaging solutions that elevate identity for beauty, cosmetic, and luxury retail brands worldwide.

With a strong focus on sustainable sourcing, artisanal craftsmanship, and scalable global logistics, we deliver flawless execution for skincare, fragrance, wellness, and personal care packaging projects from concept to creation.

- End-to-End Bespoke Packaging Solutions
- FSC® & BSCI Certified Compliance
- Advanced OEM & ODM Capabilities
- Rigorous Quality Assurance & Rapid Prototyping
- Seamless Global Export & Logistics

# Beauty Packaging Overview

From Product Categories to Complete Packaging Solutions

## SKINCARE

- Serum
- Cream
- Lotion
- Toner
- Face Mask
- Skincare Sets
- Travel Kits



## COSMETICS

- Lipstick
- Lip Gloss
- Foundation
- Concealer
- Eyeshadow Palette
- Mascara
- Cosmetic Set



## FINE FRAGRANCE

- Perfume
- Travel-size Perfume
- Discovery Set
- Perfume Gift Set



## WELLNESS

- Aromatherapy
- Home Fragrance
- Scented Candles
- Spa Ritual
- Wellness Gift Set



## PERSONAL CARE

- Hand Care
- Body Care
- Bath & Shower
- Hair Care
- Hair Extensions & Wigs



## SUBSCRIPTION & PR

- Subscription Box
- PR/Influencer Kit



## PACKAGING SOLUTIONS

- FOLDING CARTONS
- RIGID BOXES
- PAPER BAGS
- PRODUCT INSERTS
- CUSTOM INLAYS
- TISSUE PAPER
- HANG TAGS
- STICKER LABELS
- ECO-FRIENDLY PACKAGING



# Luxury Skincare Packaging



Packaging Designed for Premium Skincare Brands. Serum boxes, cream boxes, gift set boxes, and branded shopping bags - crafted with refined materials and finishing to reflect the elegance of leading skincare labels.





# Luxury Cosmetics Packaging



Lipstick boxes, palette packaging, cosmetic gift sets and luxury presentation boxes - crafted for makeup and color cosmetics brands seeking a refined, fashion-forward identity.





# Fine Fragrance Packaging



Luxury Packaging for Perfume & Fragrance Brands. Perfume Rigid Boxes, Magnetic Gift Boxes, Shopping Bags, and Luxury Insert.



# Wellness Packaging

Packaging Solutions for Wellness, Aromatherapy & Self-Care Brands



## Home Fragrance Collection

Luxury Candles • Reed Diffusers • Room Sprays



## Spa & Self-Care Collection

Bath Salts • Body Scrubs • Premium Wellness Gift Sets



## Aromatherapy Collection

Pure Essential Oils • Dropper Bottles • Botanical Kits

# Personal Care & Hair Extensions Packaging

Packaging Solutions for Daily Body Care, Travel Minis & Premium Hair Brands



## Daily Cleansing & Hair Care Collection

Premium Window Rigid Gift Box for Shampoos • Conditioners • Body Washes



## Luxury Hair Extensions & Wigs Packaging

Premium Human Hair Packaging • Silk-Lined Rigid Boxes • Custom Hang Tags



## Travel & On-the-Go Kits

Packaging for Hand Creams • Travel Minis • Multi-Pack Carrier Boxes

# Subscription & PR Campaigns

High-Impact Unboxing Experiences for Viral Brand Moments

At Omet Pack, we engineer custom packaging that transforms standard shipping into unforgettable brand rituals. Crafted for monthly subscriptions and high-profile PR launches, our solutions are optimized to drive organic social media exposure, maximize viral unboxing moments, and deepen consumer loyalty.

We deliver flawless execution across all tiers—from ultra-sturdy, eco-friendly corrugated mailers with seamless tear-strips to extravagant, multi-layered rigid presentation gift sets and luxury holiday advent calendars.



## Monthly Subscription Mailers

E-Commerce Shipping Boxes • Custom Inner Printing • Eco-Friendly Corrugated Mailers



## Luxury PR Presentation & Launch Kits

Multi-Tiered Rigid Boxes • Media Influencer Gift Sets • Custom Ribbons



## Holiday & Limited Edition Gift Sets

Luxury Advent Calendars • Festive Luxury Gift Bags • Premium Foil Finishes

## CUSTOMIZATION

---

# Customize Your Packaging

Engineering Packaging Solutions That Fit Your Brand

EXPLORE STRUCTURES, MATERIALS,  
CRAFTSMANSHIP & ACCESSORIES



### 01 / Box Styles (P. 11)

Find the Perfect Box Shape  
Choose the best box design for your products  
& industry.



### 03 / Printing & Finishes (P. 13-14)

Colors & Luxury Surface Details  
High-quality color printing, gold foil, spot UV and  
embossed details.



### 05 / Paper Bag & Bag Handles (P. 18-19)

Luxury Bags & Handle Options  
Strong and stylish shopping bags with custom handles.



### 02 / Paper Materials (P. 12)

Premium Paper Stocks & Textures  
Beautiful paper choices to match your brand  
style.



### 04 / Box Inserts & Accessories (P. 15-17)

Inside Protection Solutions Safe and elegant  
trays made of foam, plastic, or eco-friendly  
paper.



### 06 / Branded Accessories (P. 19)

Cards, Ribbons & Extra Details  
Thank you cards, tags, custom ribbons, and  
clear windows.

# Box Styles & Structures

Versatile packaging silhouettes custom-engineered for skincare, cosmetics, fragrance, and wellness brands.



Magnet Box



Two Piece Box



Rigid Folding Box



Drawer Box



Paper Tube Box



Double Door Box



Advent Calendar Box



Pillow Box



Corrugated Mailer Box



Tuck End Box

# Materials Options

Sustainable and premium material options tailored to different packaging applications. FSC® Certified paper is available.

## Coated Papers (C1S & C2S)



C1S Paper



C2S Paper

## Kraft Papers (Natural, White & Colored)

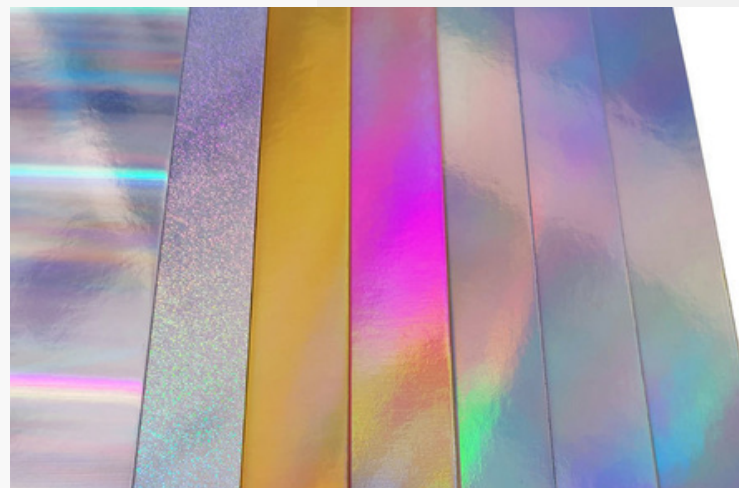


Brown Kraft Paper

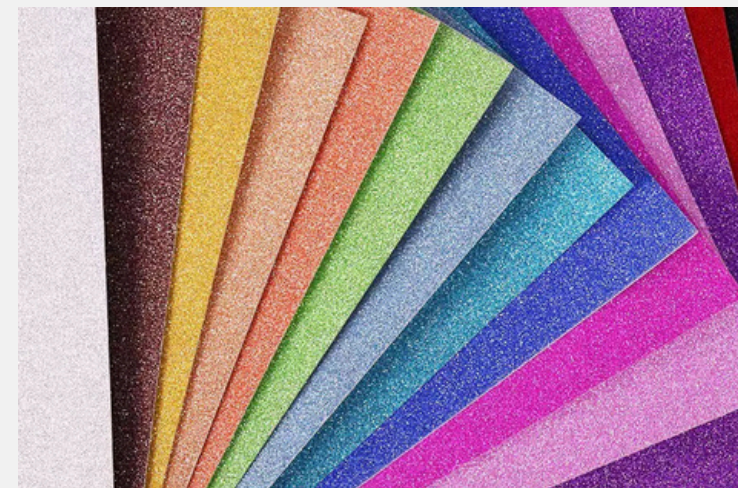


Colored Kraft Paper

## Specialty Papers & Structural Boards



Holographic Paper



Glitter Paper



Pearlescent Paper



Texture Paper

# Printing & Color Management

Advanced offset, spot, and UV-cured printing technologies utilizing certified eco-friendly and soy-based inks.



## Offset Printing

Ink Type	CMYK Full Color
Resolution	High Definition
Best For	Premium Packaging
Surface Coating	Smooth Matte
Color Accuracy	Standard



## Spot Color Printing

Ink Type	Pantone Match
Resolution	Brand Accurate
Best For	Brand Identity
Surface Coating	Consistent Tone
Color Accuracy	Exact



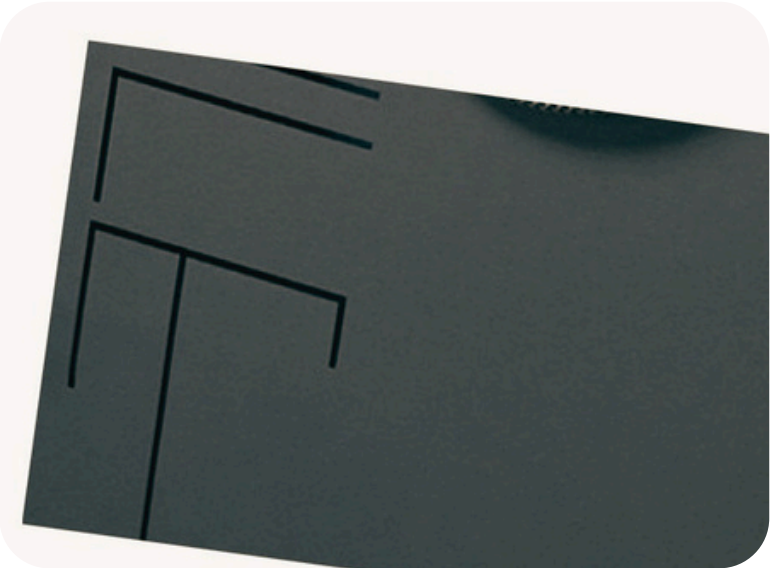
## UV Printing

Ink Type	UV-Cured Ink
Resolution	Vibrant Colors
Best For	Specialty Items
Surface Coating	Glossy Detail
Color Accuracy	High

# Finishing Techniques

Premium surface enhancements and artisan craftsmanship to elevate your brand presence.

## Surface Protection:



Matte Lamination



Gloss Lamination

## Foil Effects:



Hot Foil



Cold Foil

## Special Visual Effects



Spot UV



Reverse UV



Embossing & Debossing

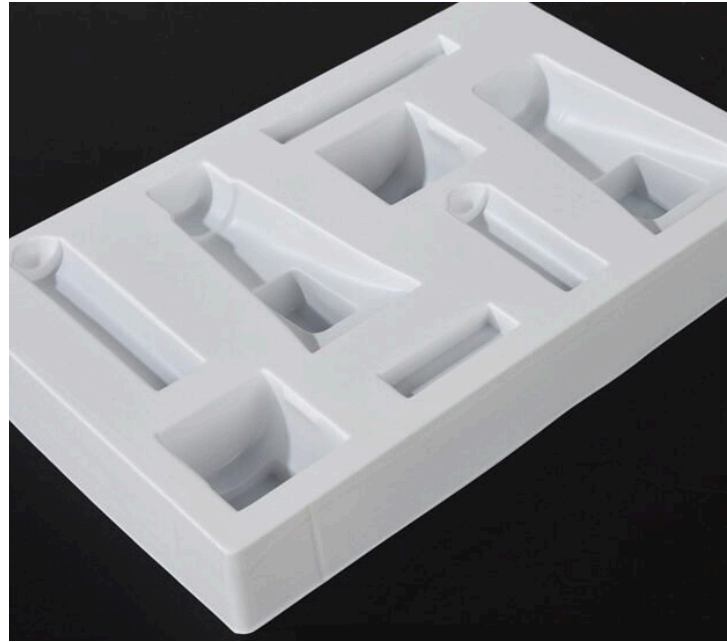


Laser Cut



Matching Packaging Suite

# Inserts & Tray Options



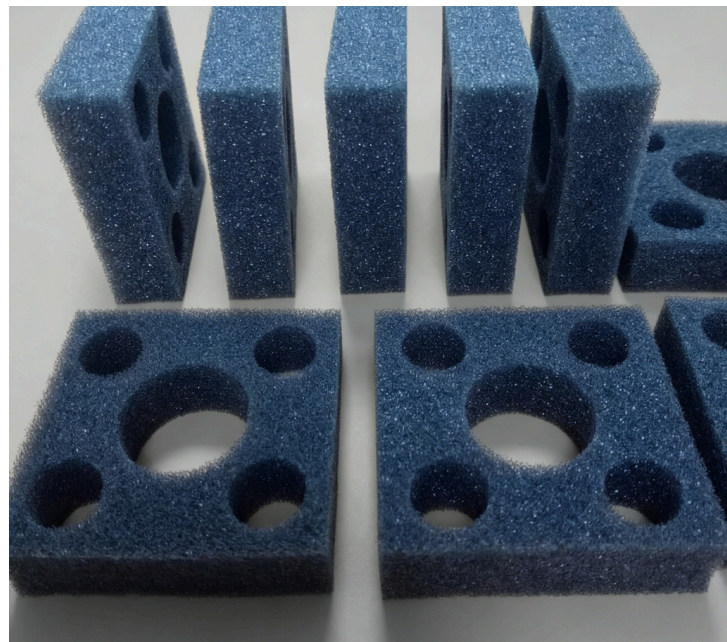
**Blister**



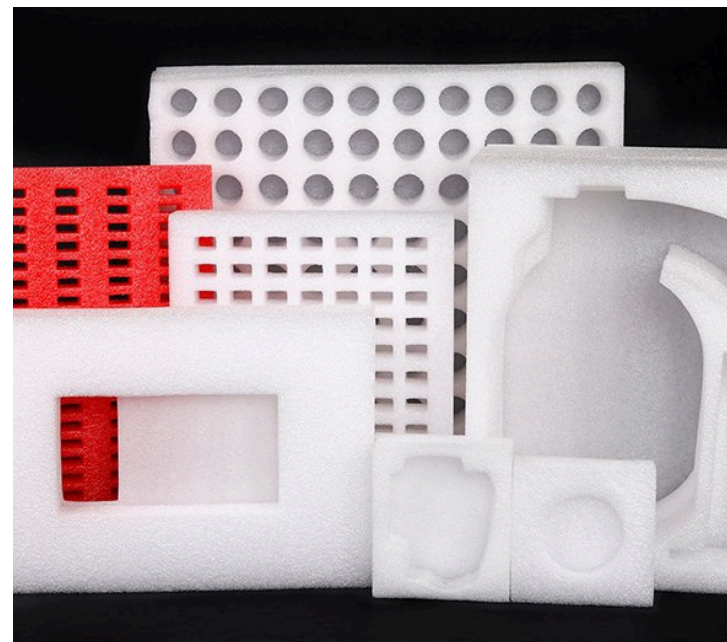
**PET**



**EVA Foam**



**Sponge**



**EPE**



**Paper**

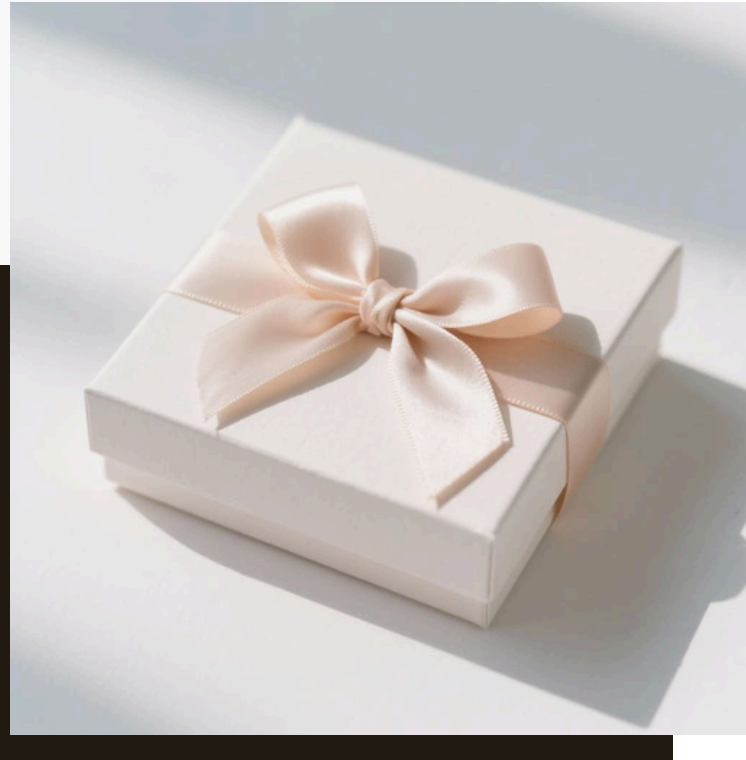
## Custom Protection

Tailored internal trays and structural lining engineered for flawless product protection and premium presentation. Each material offers certified shock-absorption to secure delicate cosmetic, fragrance, and wellness items while elevating the luxury unboxing ritual.



# Accessories

Artisan enhancements and functional add-ons tailored to elevate your unboxing experience.



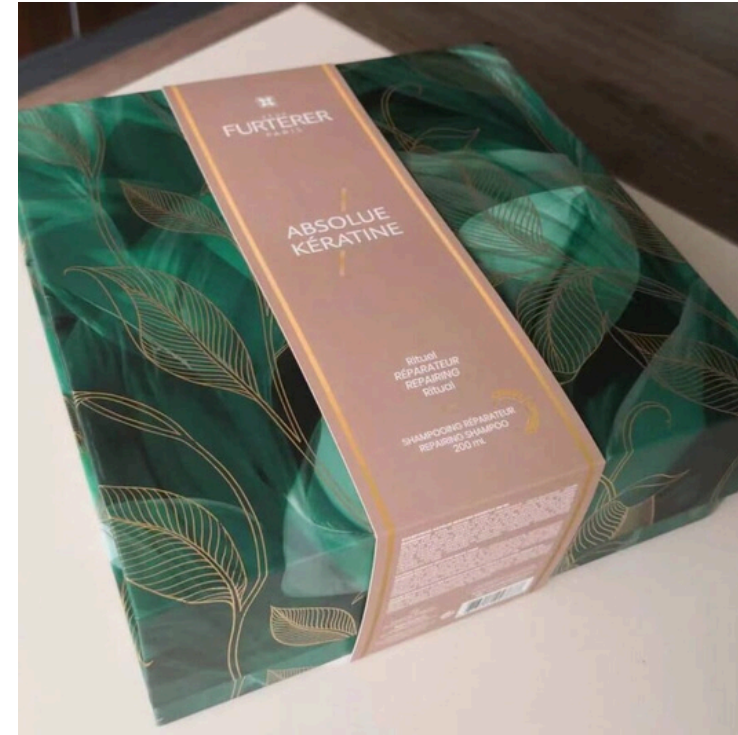
## Ribbon & Handles

Premium satin ribbons, grosgrain ribbons and custom handle solutions for elegant finishing.



## PVC Windows

Clear PVC window patches for product visibility, available in various shapes and sizes.



## Paper Sleeves

Extra paper wrap that protects the product and adds simple branding.



## Hardware & Closures

Metal buckles, magnetic closures, and decorative labels for premium presentation.

# Paper Bag Styles

Premium carrier bags designed for luxury shopping experiences. Fully customizable in sizing, eco-friendly paper stocks, finishes, and handles to perfectly reflect your brand identity.



# Paper Bag Handles

High-durability handle materials and structural reinforcements tailored for premium retail branding.



Satin Ribbon



Grosgrain Ribbon



PP Rope



Cotton Handle



Organza



Paper Handle



Die-cut Handle



PVC Handle

# Printed Accessories

Artisan collateral and insert layers crafted to enrich the ultimate unboxing storytelling.



- **Tissue Paper Wrap**

Delicate semi-translucent wrapping tissue available with custom pattern printing or custom wax seals to secure items with an artisan touch.

- **Instruction Leaflets**

Precision-folded technical data or user guides, available on lightweight premium stocks or textured environmentally friendly papers.

- **Thank You Cards**

High-end heavy-weight cardstocks finished with blind debossing, letterpress, or metallic foil accents to build a tactile personal connection.

- **Product & Ritual Cards**

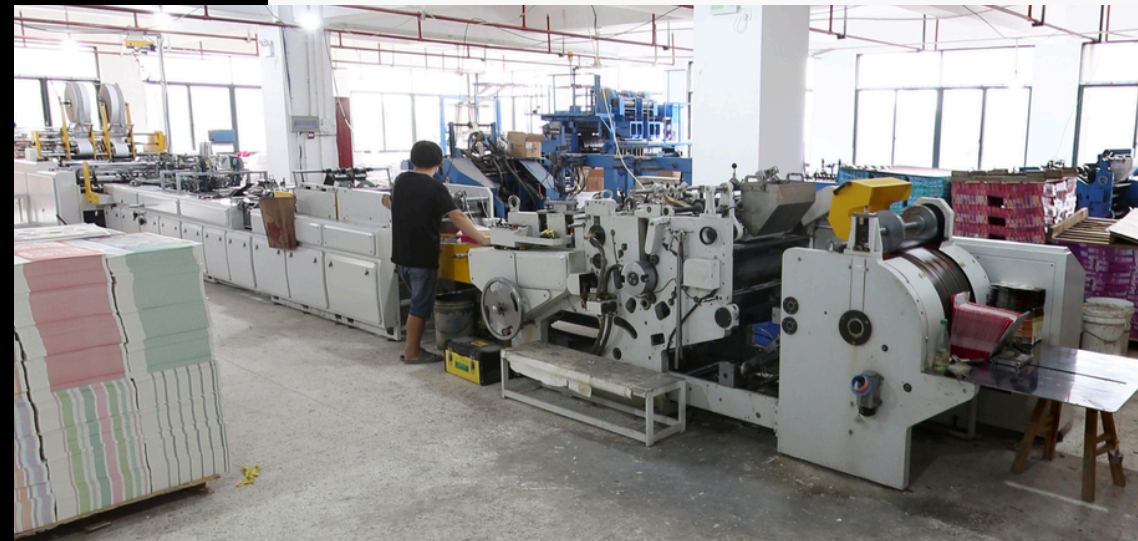
Sleek inserts designed to showcase ingredient transparency, brand philosophy, or customized product usage rituals.

- **Hangtags & Labels**

Artisan garment or bottle tags completed with bespoke die-cut silhouettes, metal eyelets, and premium raw cotton stringing.

# Manufacturing Excellence

World-class production facilities and standardized quality control systems engineered for scalable luxury packaging fulfillment.



- **Sampling: 5–10 Days**
- **Production: 20–35 Days**
- **OEM & ODM Service**

- **BSCI Audited**
- **FSC Certified Materials**
- **Global Export Experience**

# Quality Control

Strict quality control system ensures stable and consistent product quality.



### Incoming Inspection

Thorough inspection of raw materials and components before production begins.



### Production QC

In-line quality checks throughout the manufacturing process.



### Final Inspection

Comprehensive pre-shipment auditing to ensure total compliance with brand specifications.

# Our Workflow

Production & Project Management

## 01. Inquiry

Initial Contact

## 02. Quotation

Pricing Details

## 03. Sampling

Physical Proof

## 04. Approval

Confirmation

## 05. Mass Production

Manufacturing

## 06. QC Inspection

Quality Check

## 07. Shipping

Global Delivery



# Let's Work Together



**Yiwu Omet Packaging Co., Ltd.**

Email: [omet@omtpackaging.com](mailto:omet@omtpackaging.com)

Phone: +86 15258927740

Whatsapp: +86 152-5892-7740

Address: No.25, Baima Road, Fotang, Yiwu City, Zhejiang, China

Website: <https://ometpack.com/>

Ready to elevate your brand's unboxing experience?  
Contact our packaging experts today.